



# Ons Plek Projects


*providing hope instead of street life*

## 2016 Annual Report



### 2016 Annual General Meeting

**DATE:** THURSDAY 22<sup>nd</sup> SEPTEMBER 2016  
**VENUE:** ROSEBANK METHODIST CHURCH HALL  
**TIME:** 17:00 for 17:30  
**RSVP:** Tel 021-685-4052/49 or Fax 021-685-3128



Please help us cater  
for everybody by  
bringing a  
plate of eats

## Who likes AGMs?

Our children do. They want YOU there.

Remember parent's days at school? And concerts, sports days, etc. Where every child wanted a parent to "see" them perform. Our children prepare for this day. And there are seldom parents there.

Be a parent for a day to our children when they present in singing or dancing and each one is paired off with an AGM attendee for 10 minutes to show their favourite school work person to person.

*Come and celebrate with us, join us and be part of the Ons Plek family!*

**Pam Jackson**

Director

### ~ Our details ~

We invite you to visit all our Projects, meet the staff members and the children

**DIRECTOR:** PAM JACKSON

**DEPUTY DIRECTOR:** GINA JAGERS

**ONS PLEK:**

Assessment centre intake shelter and OFFICES

7 Malleson Road, Mowbray, Cape Town 7700

P O Box 12924, Mowbray, Cape Town 7705

Tel: 021 685-4052/49 \* Fax: 021 685-3128

Email: [onsplek@onsplek.org.za](mailto:onsplek@onsplek.org.za)

Website: [www.onsplek.org.za](http://www.onsplek.org.za)

NPO No. 009-578 \* PBO No. 930-001-457

**SIVIWE:**

Second-stage shelter

7 York Road, Woodstock 7925. Tel: 021 448-6529

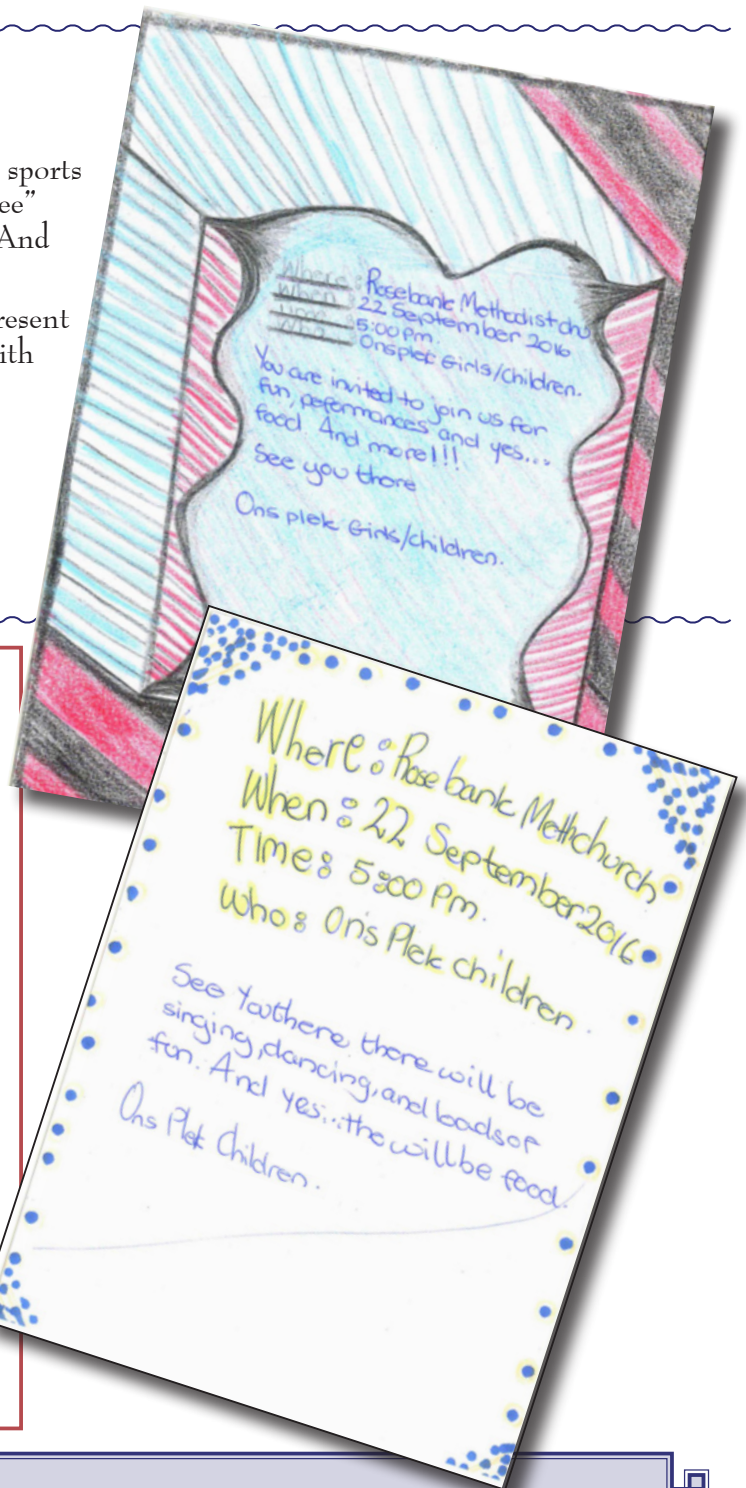
**OUR COMMUNITY DEVELOPMENT PROGRAMS:**

**UKONDLA 1:**

City Council Community Hall, Browns Farm, Philippi, Cape Town 7750

**UKONDLA 2 and 3:**

Premises of Sizakuyenza Safe House, cnr Eisleben and Phumelele Roads, Philippi, Cape Town 7750



## NOMINATIONS for the MANAGEMENT COMMITTEE of Ons Plek Projects

Nominations for election to the Management Committee must be received at our office by **9th September 2016 at 17h00.**

Nominations must be in writing and must have been seconded. Your nomination form is on the back page. If you are in need of more nomination forms, they are available from Sharon at our office. **ONLY MEMBERS of Ons Plek Projects** are entitled to nominate and second persons for election. *(Keep turning the pages for the Member's List!)*

**We thank the following current Committee Members who are willing to stand for re-election:**

- |                         |                  |                        |
|-------------------------|------------------|------------------------|
| * Roland Hudson-Bennett | * Christiana Nel | * Allerease Olanrewaju |
| * Monica Pike           | * Leslie Witz    | * Thandi Nqobobo       |

**and we welcome new Committee Members:**

- |                 |               |
|-----------------|---------------|
| * Hannes Norval | * Greg Becker |
|-----------------|---------------|



**Pam Jackson : Director**

# A Brief Description of Ons Plek's Programs

*A summary of the programs is presented for those not familiar with our work. More detailed information on these programs can be found in previous Annual Reports or on our website.*

## Family Reunification Program

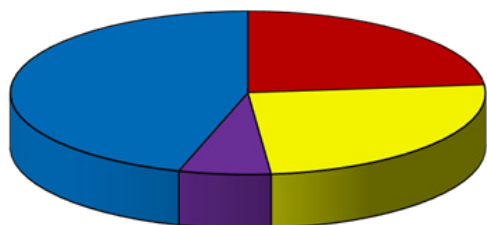
Family reunification is one of the core functions of the work at Ons Plek. In some cases it requires months or even years of painstaking work to make a home placement possible. It takes place in our Stabilization and our Long-Term Treatment Program.

### \* First Stage of Reunification

**24-hour Accessible Early Intervention Stabilization Program. Treatment Residence is Ons Plek**

Up to 15 years ago the first stage of reunification often began with the process of weaning the child off the street. For many years we have also specialised in early intervention to prevent children who are candidates for street life from actually becoming street children. Street girls are still referred to Ons Plek Intake Shelter within hours or a few days of arriving in the Cape Town CBD but the proportion of girls arriving in this way is greatly reduced. This is because over the years we have reduced the number of girls living on the streets of Cape Town to an average of 4 girls. **Every child on the street or at risk of being on the street, is an emergency for us.** The girls may be running away from abuse or neglect at home or be influenced by the wrong friends. Her circumstances are assessed immediately on arrival and then referred to our family preservation or family reunification programs.

### Reunification of children — statistics



- 15 Reunified home
- 16 Transferred to other long-term care
- 0 Placed in foster care
- 4 Refused help
- 29 In our care as at 31 March 2016

- \* The 4 children who refused help, returned home without our blessing. Designated social workers were informed.
- \* During the year we had 48 children in Stabilization Program and 16 in Long-Term Care Program.

### \* Second Stage of Reunification

**Long-term Treatment. Treatment Residence is Siviwe**

Siviwe, meaning God has heard us, provides the second phase of treatment. Once the girls have weaned themselves from street life at Ons Plek or are more stable, they leave to be accommodated at Siviwe for the next phase of treatment.

Separated from the girls at Ons Plek, who are still making the transition to a structured life, girls at the Siviwe shelter can focus more intensively on building their lives.

It is our core aim to reunify children with their families. Four children refused help, running away to family members. The use of drugs and an attitude of 'we have rights' without an understanding of responsibilities to balance is the reason many children are refusing any authority, running away from home and from us.

### ■ Reunification and Preservation Program

Children who have only been away from the family for a day or two weeks, would fall under the preservation program. If the family bonds are still sufficiently intact for the child to return home while the problems are worked on, it is called family preservation. Staff members hold family meetings and family building sessions with families. Our Ukondla Program focuses primarily on preservation (see below).

### ■ Home Visits — local and rural

Home visits are important in making family reunification possible. We have done very few long distance visits to the Eastern Cape again due to fewer Eastern Cape children this year.





## ■ Intervention Programs, Life Skills and Skills Training as related to Reunification

A healthy self-image and feeling of belonging and mastery is crucial to the girls' willingness to engage in problem solving with their families and their communities.

*If reunification fails,  
the same process enables them  
to engage constructively in society.*

A range of skills training and development programs are provided while the reunification process proceeds, however long that may take. Every activity we offer has a goal and purpose in the children's lives.

## ■ Social and Practical Skills — Household Duties

On a daily basis the girls do individual cleaning duties as decided by the Child Care Worker. The girls are responsible for making their beds, cleaning the rooms and the house in general, school uniforms are washed, and ironed in the afternoon. The girls prepare a weekly shopping list and actively do the shopping as well as cooking the meals for the household.



*Household duties ~  
cooking and washing dishes*

## Counselling Program

- Trauma counselling
- Life Story sessions to root the child in her history
- Family Therapy sessions



## Social Skills Program

### ■ House Meetings

House meetings take place as determined by household needs. During meetings the girls learn to practice listening skills, respect each other's opinion and share ideas in an accepting and non-judgmental way.

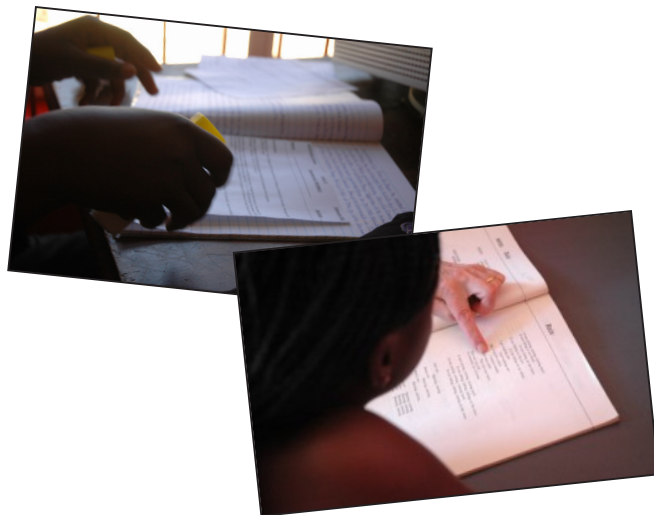
### ■ Church/Mosque/Youth Attendance

Most girls attend the local Methodist Church on Sundays where they interact with the community and experience a sense of inclusion and acceptance.

## ■ Cultural and Traditional Activities

### ■ Groups on Relationships, Friendships, Sexual Relationships and Body Care

The purpose and content of the groups is to educate the girls on positive ways to deal with people in their lives and to gain self-respect. Topics include body change and growth, good relationships/bad relationships, teen pregnancy, contraceptives and HIV/AIDS.



### ■ Preparation to Graduate

CV preparation, job interview, skills, budgetting. Our whole program is preparing children to graduate in that they learn everything they would learn at home re shopping, cooking etc. which is very unusual for a Childrens' Home. Usually Homes have food delivered, they have a cook and dishwasher. The children live in the equivalent of a hotel.

*Preparing for  
a life of  
sunshine*



## Education Program

**39 in Informal Bridging School**

**23 in Formal Schooling**

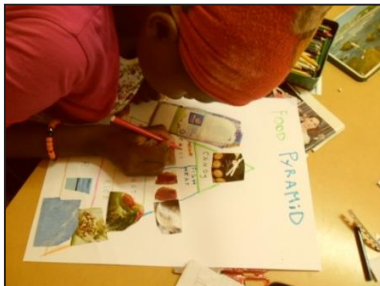
**2 Creche**

With a higher number of children in the Stabilization Program for 3-6 months there is a higher number in our Bridging class. Once settled the children return home and attend their own schools better equipped to cope there. Those children who are long-term with us attend formal schooling.

If the children can cope at school, it greatly increases their chances of fitting in and being accepted by their family and their community. Girls attend formal schools after attending our own 'Bridging School'.

### ■ School Assessment and Bridging Program for girls not yet ready to return to school

Our school runs from Mondays to Thursdays 09:30 to 12:00, with art and other creative programs on Fridays from 08:00 to 12:00. Their education abilities are assessed and they learn to re-adapt to routine and structure and gain confidence in their abilities. We had 39 girls in the Bridging Program.



### ■ Formal Attendance at Formal Schools

As soon as possible children attend formal schooling.

### ■ Homework Sessions

The girls at formal schools attend our homework program every afternoon from Mondays to Thursdays. There were 23 girls in school.



## Prevention Project

### ■ Ukondla Program in Philippi (Browns Farm) Community

*The highlight of the year has been the enthusiastic participation of the parents in our Parenting meetings.*

In addition to our overall strategy for dealing with girls vulnerable enough to dwell on the streets rather than in their homes, we are running 3 preventative programs in Philippi community to preserve families. As children drop out of school before they drop out of home, a homework support program coupled with counselling to parents and children, helps them stay in school.

At Ukondla 1, 2 and 3 a group of ±24 children at each Ukondla attend homework support, enrichment programs and weekly counselling sessions. The program runs on Mondays to Fridays and is similar to the in-house support program at Ons Plek, **except that the children live in their own homes.**

### ■ Home Visits

Staff members regularly visit all the children's family homes and their parents are now very supportive of the program.

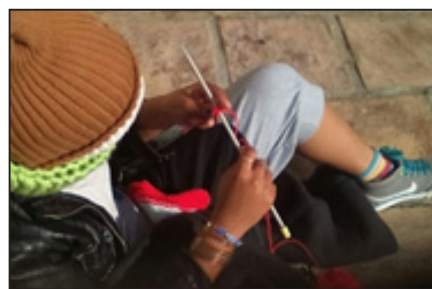
The response to Ukondla's work from teachers, parents and children has been to beg us to open a centre in their schools as Ukondla's children's school performance improves so markedly. The parents notice the change in their children's behaviour and several have changed their parenting techniques after discussions with our staff who are trained in parenting techniques. The children themselves are enthusiastic about the activities. Several reveal very traumatic stories in their counselling sessions and healing can begin to take place.

A partnership with Sizakuyenza has been fruitful where we have two venues on their property.

*As children drop out of school before they drop out of home, a homework support program, coupled with counselling to parents and children, helps them stay in school.*

### ■ Holiday Program for residences and Philippi

As with all other programs at Ons Plek, the Holiday Program's aim is to include preparing the girls for life in their homes and communities, and to give them opportunities for development — intellectually, socially and emotionally. The aim is never to lure them away from the streets with elaborate treats. This would be counter-productive, maintaining the pattern of alternating over-excitement and apathy which can trap children in street life. Most vacation days at Ons Plek are spent at home — playing games, doing puzzles, playing "poppie huis", chatting, walking to the local park, and just being children. Education visits such as museum, art gallery, Jewish Museum.

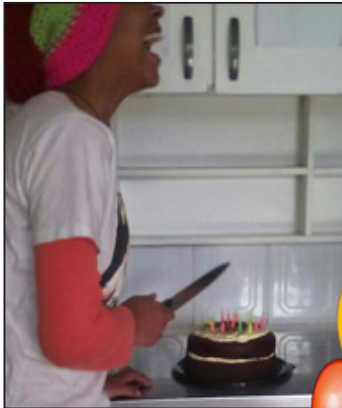
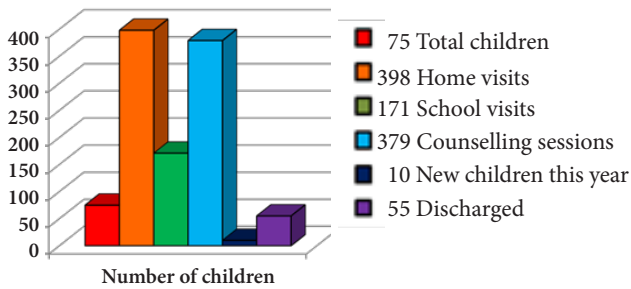


*Holiday skills ~ can't stop knitting!*





## Prevention Project — statistics



*For many girls, their first birthday cake!*

## Corporate Social Responsibility

### Tax Deductible Benefits:

We are registered as a Public Benefit Organisation and thus all donations to us are tax deductible under Section 18A of the Income Tax Act.

### Pay less estate duty:

Being a Section 18A Tax Benefit company means that your family will save from payment of estate duties.

*A couple of photos from 2007 ~ activities at Philippi*



## Volunteer Program for Residences and Philippi

### ■ Recruitment, Orientation, Supervision

This year we continued to make intensive use of local and international volunteers (2) and student interns (6) who work part-time or full-time for Ons Plek for periods ranging between 3 and 10 months. They provided a range of activities, including computer skills training, reading, art, drama, education, leadership training, swimming and baking. As we had many girls in formal and bridging school this year, the volunteers had to work hard at supporting the girls in these programs.



*Ukondla Project in Philippi*



### HAVE YOU MOVED?

Please advise us of your change of address if you have moved home or office ... it's so disappointing when the 'thank you' letters that the girls have written, or our newsletters, are returned to us!

*We acknowledge with gratitude  
the valuable support of our  
MAJOR DONORS:*

**CENTRAL METHODIST MISSION**  
—in the form of a very reasonable rental  
**DEPARTMENT OF SOCIAL DEVELOPMENT**  
**PROVINCIAL ADMINISTRATION**  
— Western Cape

**GLOBAL MINISTRIES** (Indianapolis)  
— Africa & United Church of Christ

**GLOBAL MINISTRIES**  
(Institutional and Women's Division) — USA

**INTOMBI**

**QUAKER SERVICE CAPE**

**STICHTING STRAATMEIDEN KAAPSTAD**

**STREETSMART**

**SOUTH AFRICAN ASSOCIATION  
OF HONG KONG**

**UNITED METHODIST WOMEN**

**VITAL HEALTH FOODS**



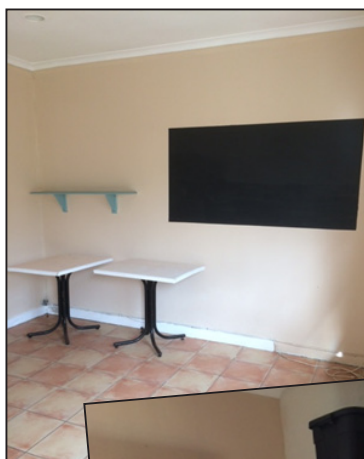
*Faniswa ... all in a day's work!!*



*Common sight while we get the new  
house ready*



*Education Room wall decorated with  
words of encouragement  
and motivation*



*Bridging School  
classroom*

*before  
and then ...  
after*



# Ons Plek ❀ Siviwe ❀ Ukondla

## Ons Plek Projects consist of:

- ❀ **Ons Plek** intake shelter for girls doing comprehensive assessment and development care with reunification as a priority.
- ❀ **Siviwe** second-phase shelter for girls focusing on therapeutic and developmental children's home with reunification as a priority.
- ❀ **Ukondla** — Community Project with prevention as a priority run at three venues in Philippi for boys and girls at risk of becoming street children.

## ~ Mission Statement ~

### Ons Plek Projects has a simple and passionate mission:

**To make a substantive improvement in the lives of female street children and to prevent children at risk of becoming street children from doing so.**

Ons Plek Projects provides places where children find opportunities to build their lives and their self-esteem. Places where a sense of belonging helps them to take responsibility for themselves and for others.

The preparation for the future lives of each child takes into account the innate potential of the individual within the realities of her life circumstances.

These realities are mirrored in all aspects of our projects which enables us to model coping mechanisms; children participate fully in decisions about their lives; residential staff members share the lives of the girls; office staff members make do in cramped quarters with only the essentials for the job; and our community projects model how a lot can be done by dedicated staff members with few resources.

*Ons Plek is not an escape — it is a real home in a rough life*

## Ons Plek's Vision ...

*That female street children will be successfully re-united with their families and that failing that, they will be sufficiently empowered at Ons Plek Projects to grow into healthy, independent functioning members of society.*

*The children at risk of becoming street children will use our interventions to keep them as constructive members of society.*

*That children living in communities with their parents who are at risk of becoming street children will be enabled to remain in school and with their families.*

### Key Information with regard to the Work, and the Context of the Work, of Ons Plek Projects

- Ons Plek is the only comprehensive program for girls on the streets in the Unicity of Cape Town.
- Our intake shelter is situated in the CBD of Cape Town, because it is central and is where children and youth run to for relative safety if city security systems allow them.
- The sources of the children's problems are not easily solved – deepening poverty, abuse, lack of affordable safe housing, unemployment, crime, family instability, alcohol abuse, family violence, etc.
- Girls come or are referred to us from different areas. Some girls roam around their home community with inappropriate friends, often hanging around cheap local liquor and entertainment centres, before seeking help further afield.
- Girls who seek help are often teenagers, but also younger girls, sometimes girls with babies.
- Children tend to cope with an inordinate amount of trauma before leaving their home environments. These psychological scars may take a long time to heal for many of the girls.
- Those girls who find it the most difficult to reintegrate with mainstream society are often also living with learning difficulties and even severe mental health problems.
- Unaccompanied foreign minors are very vulnerable, and are ending up in the 'street children' sector.
- Ons Plek works with an average – 100 to 150 girls per year.
- Our community based prevention programs successfully keep 'at risk' children from running to the streets. They provide a support structure in community for children from the shelters when re-unified with their families.
- The work of our three main facilities is all interlinked. The three programs integrate to form a whole.



# Are YOU a MEMBER of Ons Plek Projects?

## Current Membership Register:

In order for our membership to be accessible to everyone, we consider any donations in cash or kind from INDIVIDUALS in the course of the year as sufficient to cover our annual membership subscription. You may also become a member by paying a specific subscription of R5 per annum. If you have donated and your name is not listed below, please contact Sharon at Ons Plek immediately in connection with your membership before the AGM. You will also have the opportunity to sign up as a member at the **AGM on Thursday, 22nd September 2016.**

### MEMBERS ON RECORD:

- A:** Abraham T, Adam C, Adams F R, Adams F, Adonis T, Afrika T, Agliotti A, Aisha, Allan K, Allers C, Arendse Mr & Mrs R, Ascott T, Aunty Gill, Aunty Marel, Aunty Natasha.
- B:** Baird M, Baloyi K, Barfield S (UK), Bartlett I, Bartman L, Bassier S, Basson A, Becker G, Ben & Leonie, Berghouse A, Berman M, Blumenthal A, Botha S R, Bowen C J, Bowry S & A, Brown P, Brown Y & C, Buchhorn B, Buckley J E (UK), Bunker M, Bush A.
- C:** CAF Gaye, Cannata C, Castro H & N, Caswell T, Cecsarini L (USA), Cele S (UCT), Channind C, Chiat L, Chowles J J, Chukwunye E, Clarke L, Coamans R, Coertze S, Collins Mr M, Connelly Mr & Mrs, Conradie G F, Count & Countess Labia, Court R, Creighton Z, Crombach L, Currin D.
- D:** Dalemans S, Daly B, Davida, Davids K, Davis K, De Castro A, De Jager H, De Jong M, De La Harpe M, Diaz F & H, Dollie I, Dos Santos N, Dower J, Du Plessis R, Du Preez, Du Toit M, Dullaart A G, Dumbutshena R, Duncan C, Dunchar A, Dyson C.
- E:** Ebden C, Ebdie Family, Engel Mrs V C, Esau S, Esteves B, Etsebeth Pierre & Wanda wedding, Eze Mr & Mrs, Ezeibekwe C.
- F:** Fagrie, Farrell Mr L J, Filday H, Filippi M J, Fisher R, Fisher S, Fourie E, Fourie J, Francesca, Frater Mrs S M.
- G:** Gabriel C, Gallagher S, Gamiet A, Ganief T, Geldenhuys M, Ghai S, Ghalpie S, Gilowey C, Gilowey J, Godfrey, Gold Y, Goldblatt M, Golfi C, Gouws J, Gowar K, Gram C (Norway), Graner P (Germany), Grobbelaar K, Groenevelt B, Grothoff M, Gurtschmann N, Guy A, Guyeu J.
- H:** Hagens N (Holland), Hardy Dr A, Hare E, Harper K, Hasapis H, Hayden G, Hennessy Mrs K, Hey B M, Hicks M, Hill P A, Hoimman R, Hudson-Bennett R.
- I:** Isaacs H, Ismail A.
- J:** January E, Jenike A, Jones K, JP, Judd E, Juhaid Mrs, Julie & Anna.
- K:** Kanguru R, Kawitzky R, Keel J, Keen J, Khan S, King G, Klippel R, Knoop L (Netherlands), Kollner Mrs, Kruger H, Kuyper R, Kyle.
- L:** Laakman H, Laberis A, Lambe S, Lambrechts R, Lanzoni G, Latimer N A, Lawrence JH, Lawrence M, Lawton A, Le Roux M & A, Leclezio F, Lezerine, Liberty M, Lindhard N C - Estate Late, Lindi, Litten S, Llody J, Louw J, Louw T M.
- M:** Mabandla W, MacMillan, Magnus Mr A C & Mrs S R Maxwell (UK), Maharaj A, Majiet Mr, Manuel T, Maragelo L, Marais C, Marcus A, Marizu O, Marks S, Martin Y, Mashaba L, Maureen, Mazula V, McGrath 88, Meadows M & J (USA), Memvoca O, Mess Daniela, Meyer L, Michelle, Mills S, Minnaar A, Mitchell A, Mitford L, Mompoti B, Morrell T, Moss S, Mukanairi T, Mukuyimana V, Muller Rev B, Muriel Aunty, Muter W, Muylle J, Myburgh S.
- N:** Naicker N, Nel C, Ngcobo T, Niewoudt L, Nivens B, Nizam N, Nkosinathi T, Norval H, Notwala M, Nunes S.
- O:** Oberauer P & B, Obinna M, Ogbodo M, Okafor E, Okafor K, Okeke Family, Okoli P, Okoli O, Okoye O, Olanrewaju A, Oosthuysen C.
- P:** Pedro E, Perry S, Peter, Phepheta B (E-TV), Pijpers G, Pike M, Pillay D, Poznanovich C, Preller A.
- Q:** Qukwana L.
- R:** Rabinowitz B P, Ramsay S, Reandre, Redcliffe Q, Reeves E, Ries R, Robertson Mrs G M, Robins E, Robinson B, Robinson S, Roodbol A, Roux Mr J, Rowston D, Rundle Rev & Mrs A, Rundle M, Russon S.
- S:** Sahara & Anisha, Salie M, Samuels J, Sane, Saunders J, Saxico A, Scello I, Scerbauskaite I, Scheder F, Scheder-Bischin Family, Scheepers A, Schemfer M, Scher T, Schmidt C (Europe), Schmitt C, Schwarzenbek L (Shield SA), Scott L, Seelig D & C, Seibert Family (USA), Shapiro Y, Sharifa E, Shenker T, Shepherd M, Siebrits P, Silverman Mrs, Simpson C, Sirkhotte M, Skotnes A, Slamang M, Smith B, Smith S, Stelling A, Sterling A, Stevens D, Steyn C, Stichting A & O (Rotterdam), Stone L, Strong G, Strydom J, Strydom Mr P, Stuart D, Stuhler J, Subramoney D, Swarts X.
- T:** Tachibana K, Tarryn, Thibault A, Thompson D, Tough Ms J, Trew E, Turkstra H.
- U:** Uchenda C, Ugochukwu O, Uzoka E.
- V:** Van Biljon P, Van der Westhuizen M, Van Dorsten J, Van Niekerk C, Van Niekerk J, Van Rensburg C, Victory N, Vos Dr Paul & Mariet, Vosloo M, Vucurevic M.
- W:** Webster R, Welem N, Wheeler D & E, Wilkinson A, Williams L, Williams P, Wilson Bruce, Wilson K, Windvogel K, Windvogel L, Winkler Family, Winstanley C, Winstanley K, Witz L, Womersley G, Woolf A, Worthmann Ms U, Wright Family, Wright Mr G R & Mrs M E (UK).
- Y:** Yousef M.
- Z:** Zittel S, Zondi L.







## ORGANISATIONS, SCHOOLS, ETC:

- A:** "G.N.O.", Admakers International, Admarula, Aerotechnic/BWS, Africa Film Services, Alore, Amazing Grace Team, Art of Living, ASDA Merchants, Atrium Foundation.
- B:** Barclays Bank, Beljan Trust, Best Centre, Blue Planet Renewable, Bluegum Hill, BWS.
- C:** C M Barry & Co, C T Sewing Centre, Camps Bay School, Cape Union Mart, Carter Family Charitable Trust, Cause Cast (USA), CCID, CCMA, Cecil Jowell Family Charitable Trust, Charlie's Bakery, Chosen Group of Friends, City of Cape Town, ConnectaQuote, Crystal Towers.
- D:** Damelin Cape Town, Datafin, Department Health, Dimension Data, Din Din Trust, District Six Museum & Homecoming, Douglas Jooste Trust.
- E:** Edward Daniels Charity Trust, Engen Petroleum Ltd, Everbest Art Jewellery.
- F:** FD Project, First Rand Volunteers, FNB Long Street Branch.
- G:** Good Hope Seminary High, Gourmet Food Distributors.
- H:** Heart FM.
- I:** IMO State, Investment Wise P/L.
- J:** Jonga Trust, Just Claire.
- K:** Khans Butchery, Kidz2Kidz.
- M:** Magistrate's Court CT, Marine Solutions, Meridian East Grinstead Rotary Club (UK), Metal Windows, MLT Shuttle Services, MOL SA (Pty) Ltd, Molo Songololo, Moonlight III Productions.
- N:** Nebula, Nolan Tyres, NPA Western Cape.
- O:** Okuhle Media, Oranjia Jewish Child Youth, Orms Print Room Staff, OTI Africa/Petrosmart P/L.
- P:** Percy Bartley House, Pine Needles, Point Blank Marketing, Prime Media ~ Leserskring, Project Hygiene.
- Q:** Quaker Service Cape.
- R:** R & L Architects, Radisson Blu Hotel, Rape Crisis, Redcup Village, Relate, RGA Reinsurance Co. of SA Ltd, Rotary East Grinstead.
- S:** SA Human Rights Commission, Scouts Honour, Shell Head Office, Shimmy Beach Club, Signatura Homes, Sokem Africa Food, Solution Ground, Springfield Convent School, St. Bernard's Book Club, St. Cyprian's School, St. John's WP Prep., St. Ola's Trust/F H Baumann, St. Agnes, Stepping Stones, Stone Age Construction, Suiderland Development Corporation Ltd, Summerheart, Sunshine Colours.
- T:** TAJ Cape Town, Tenesse Group, The Atrium Foundation, The OWL Club, TnCIS ~ USA, Tokai Lions, Top Form~Comrades 2016, Trafalgar High School, Truworths Elements.
- U:** UCS Solutions (Pty) Ltd, Usborne Publishing (London).
- V:** Vesquin Trading (Pty) Ltd, Vital Health Foods, Viv Gordon Placements Staff.
- W:** WC Dept Cultural Affairs & Sport, WC Street Childrens Forum, Welgelegen Boutique Hotel, Wictra Holdings (Pty) Ltd, Woolworths.
- Z:** Zone Fitness.

## CHURCHES:

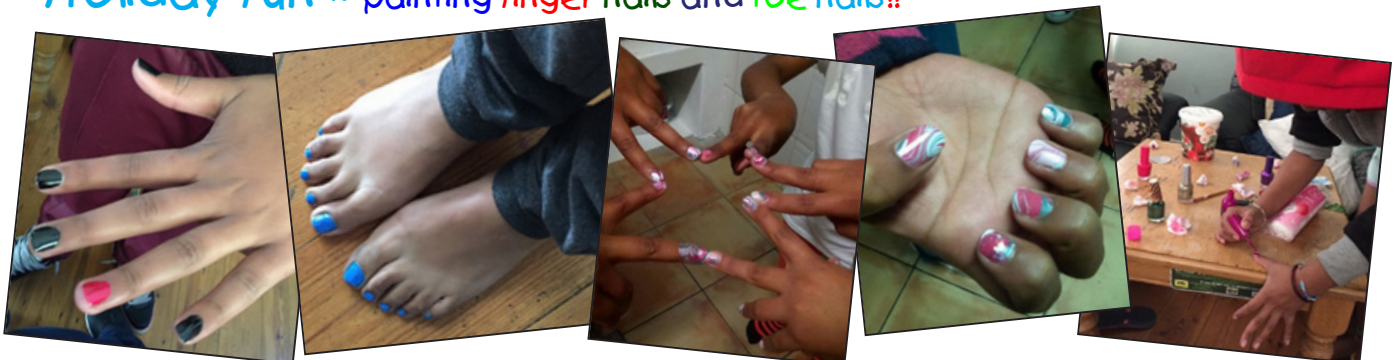
Bellville Methodist, Davis Memorial Presb Church (USA), Eastridge Church of Christ, Gereformeerde Kerk, La Borne Church Cape Town, Ludlow Methodist Church (UK), Cape Town Methodist, New Apostolic Church Woodstock, Salt River Methodist, Salt River Seven Day Adventist, Scripture Union, Sea Point Evangelical Congregational Church, St. George's Cathedral, St. John's Church Wynberg, St. Mary's Cathedral Cape Town, St. Peter's Church Camps Bay, St. Thomas' Church Rondebosch, Temple of the Spirit of God, The International Grail, Unitarian Church, United Reformed Church.

## UNKNOWN:

Please do contact us if your name has been omitted. We have a number of donors whom we are unable to identify.

---

**Holiday fun ~ painting finger nails and toe nails!!**



## Our Wish List ...



### FINANCIAL DONATIONS FOR:

- Transport costs for the girls for school (bus/train tickets) AND for educational outing/camps.
- Medical expenses e.g. Eye Tests for the girls.
- Ukondla photocopy costs of educational exercises (cheaper than buying books for each — only need certain pages from each book depending on child's abilities).
- Mats, carpet, plastic chairs, 20 lap desks for Ukondla (please contact us first).
- Kettles and irons.
- Workbooks and educational books for bridging school (list available).
- External safety gate for Siviwe.

**TOILETRIES:** Roll-on deodorant, body lotion, shampoo and conditioner, toilet paper, Vaseline, hair straightener (**must be mild**), black shoe polish, shoe brush, Nitagon lice shampoo (clinics no longer supply this), sanitary towels (pads), flannel nappies.

**SCHOOL CLOTHES:** School tracksuits, grey pants/skirts, white shirts, jerseys (school colours).

**UNDERWEAR (Brand New Please!):** Panties and bras for young girls aged 5-18 years, briefs for boys aged 2-5 years.

**STATIONERY:** White photocopy paper, A4 coloured project paper, Flip files, A4 hard cover books (288 & 192 pgs), scientific calculators, Pritt Sticks (large), project board, examination pads, Ponal wood glue.

**School Stationery:** Pritt original (40g), pencil bags, ballpoint pens (black, blue and red), homework diaries, Oxford dictionaries (English ONLY).

**FIRST AID KITS:** Panado, cough syrup, flu packs, plasters, bandages.

### ADDITIONAL ITEMS:

- |  |                   |
|--|-------------------|
| *Saucepans                                       | *Forks and spoons |
| *Plastic cups, plates and bowls                  | *Mops and brooms  |
| *DVD/CD player                                   |                   |
| *Dustbin (large plastic) for kitchen             |                   |
| *Power Point Projector (please contact us first) |                   |

### ACKNOWLEDGEMENTS:

**Henk Blom** (Zeplin Productions 082 667 1688), **Salty Print** (021 448-5620) for printing.  
**Wendy Wilkinson** (The Write Setting 021 850-0684) for typesetting Newsletters and AGM Reports.

## Keeping track of your donation

If you are depositing money straight into Ons Plek Projects' bank account, please enter your surname AND initials, or your company's name, or Anonymous (if you prefer) in the **REFERENCE BLOCKS** on the **DEPOSIT SLIP**.

This information then appears on the bank statement and identifies who we need to receipt and thank for the donation.

### OUR BANKING DETAILS:

**Bank:** FIRST NATIONAL BANK  
**Account No:** 620-529-16908  
**Branch:** ADDERLEY STREET  
**Branch Code:** 201-409  
**In name of:**  
**ONS PLEK PROJECTS**  
**Swift Code:** FIRNZAJJ

Monies being deposited from overseas (telegraphic transfer) must please reflect the swift code.



Please cut along the dotted line and forward completed Nomination Form to Ons Plek Projects by 9th September 2016



## NOMINATIONS FOR THE ONS PLEK PROJECTS' BOARD

I, ..... hereby propose .....

for the Board of Ons Plek Projects for the ..... term of office.

Seconded by .....

I, ..... hereby accept the above proposal.

Signed .....

Date .....